

Actual Articulograph AG500 software (AGMaster)

Involved program files

After this procedure, the following program files will not be started on system start up:

AGMaster.exe
 Maggen.exe
 Senrec.exe
 protoin.vxd
 protoout.vxd

The programs will stay on your system but will not be activated. So they do not have any influence on your system performance.

Deactivate the actual Articulograph AG500 (AGMaster) software

This procedure describes how to prepare the Articulograph system for loading new software without deleting the program files. The second section describes how to reactivate the actual running programs again (reverse this action).

Normal system start up – work on Trans-Computer

Switch on the system and wait until the AGMaster program on the Trans-Computer shows all green conditions.

Stop Maggen and Senrec

To stop the transmitter (Maggen.exe) and the receiver (Senrec.exe), please activate the extended functions in the AGMaster program (see Figure 1 and Figure 2 or <http://www.ag500.de/AGMaster6.pdf> on page 5 and 6).

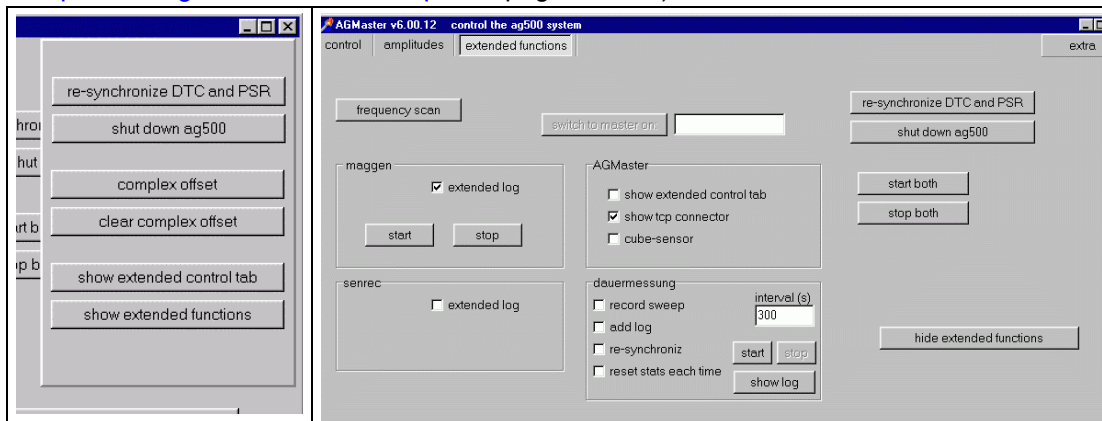


Figure 1: extra menu

Figure 2: extended functions menu

In the extended functions menu please click the “stop both” button.

Minimize the AGMaster window

Revision: 0	Released
date: Monday, July 14, 2003	date: not yet
by:	by:
Q:\QM\Manuals\AGMaster\On-Offprograms.doc	

Run "ag_bscan" to clear programs

Select

Start | AG500 | ag_bscan

to execute the boundary scan program for loading the FPGA and the Maggen program (see Figure 3).

Click the "clear program" button – the program window should look like Figure 4.

Next click the "program FPGA" button.

The FPGA becomes programmed and after a while the ag_bscan window will disappear.

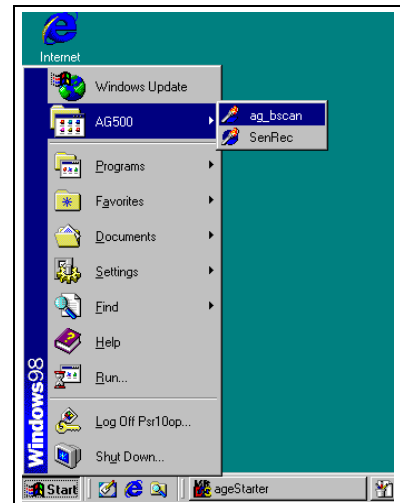


Figure 3:
start the ag_bscan program

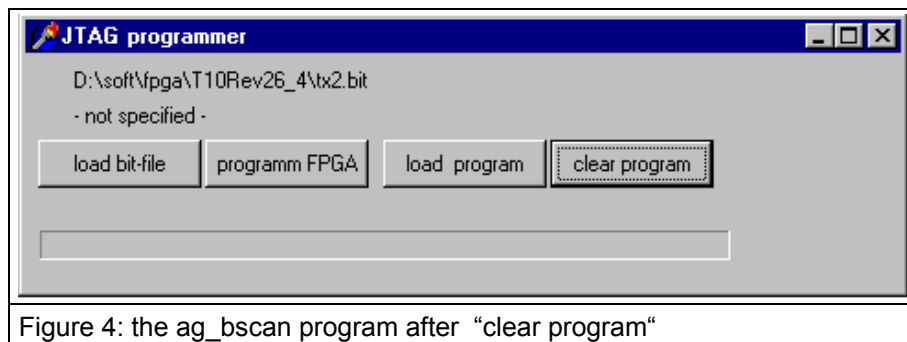


Figure 4: the ag_bscan program after "clear program"

Run msconfig to switch off autostart

Select

Start | Run (see Figure 3)

Type msconfig and click OK to execute the system configuration utility.

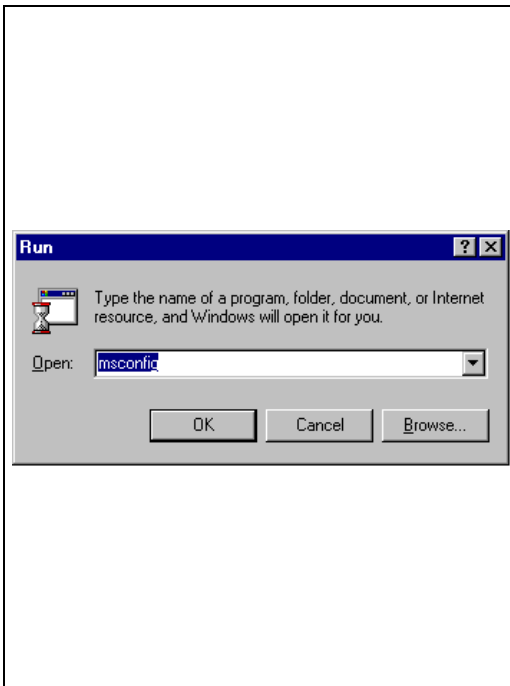


Figure 5: run msconfig

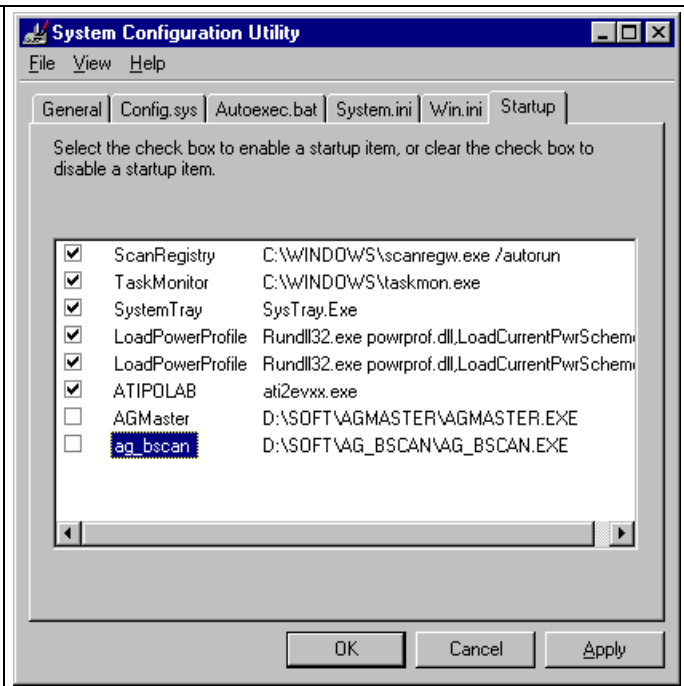


Figure 6: uncheck AGMaster and ag_bscan for Autostart

Select the "Startup" Tab and uncheck AGMaster and ag_bscan.
Click OK.

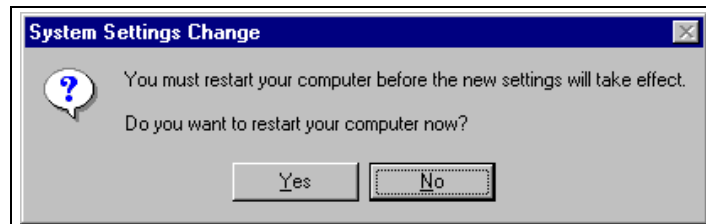


Figure 7: click No to restart later

set shared folder to "not shared"

Set "rawdata" folder and all other shared folders to "not shared". This is only to make the computer more resistant against computer virus attacks. For the newer software the shared folder are no longer necessary.

Switch to PSR-Computer

switch to the PSR-Computer:
press and release the [Alt+Ctrl+Shift] key
2
[enter]

Minimize the Senrec window

Click the Senrec Icon in the taskbar (or right click and minimize) to minimize the grey Senrec window.

Run ag_bscan to clear programs (PSR-Computer)

Select

Start | AG500 | ag_bscan

to execute the boundary scan program for loading the FPGA and the senrec program (see Figure 3).

Click the “clear program” button – the program window should look like Figure 4 .

Click the program FPGA button.

The FPGA becomes programmed and after a while the ag_bscan window will disappear.

Run msconfig to switch off autostart

Run the same procedure as on the Trans-Computer.

Uncheck only the ag_bscan option.

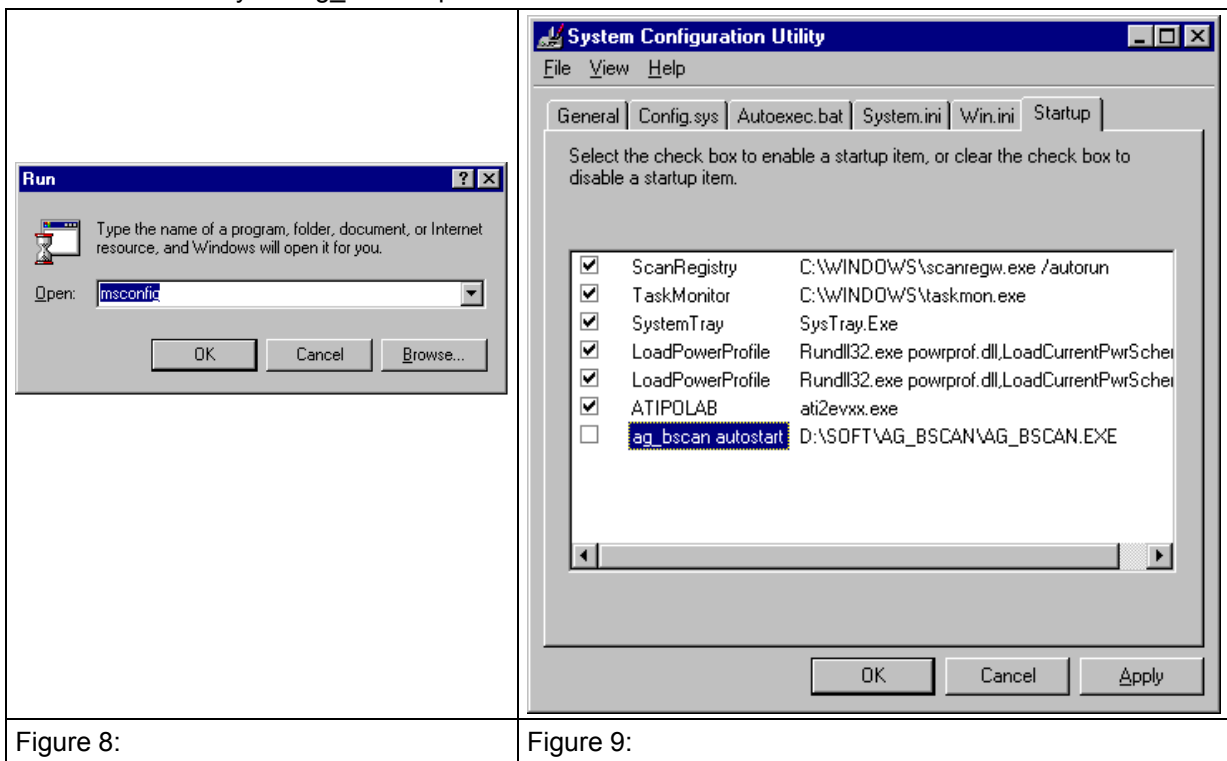


Figure 8:

Figure 9:

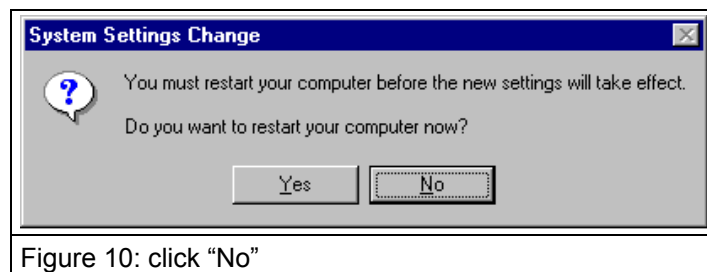


Figure 10: click “No”

Switch back to Trans-Computer

switch to the Trans-Computer:

press and release the [Alt+Ctrl+Shift] key

1

[enter]

Shut down System

Shutdown the system with the “extra menu” AGMaster program (see Figure 1 or <http://www.ag500.de/AGMaster6.pdf> on page 6).

Check the deactivated status

Switch on the system and check if there is no program active.

Activate the Articulograph AG500 – AGMaster - software

This procedure describes how reverse the deactivation described in the previous section.

Set the KVM Switch to your Trans-Computer

press and release the [Alt+Ctrl+Shift] key

1

[enter]

Run "ag_bscan" to activate the maggen.exe program start

Select

Start | AG500 | ag_bscan

to execute the boundary scan program for loading the FPGA and the Maggen program (see Figure 3).

Click the "load program" button and inside the open dialog please select the maggen.exe program in the folder D:\soft\maggen.

Next click the "program FPGA" button. The FPGA becomes programmed and the maggen.exe gets started. After a while the ag_bscan window will disappear.

Click the Maggen Icon in the taskbar (or right click and minimize) to minimize the grey Maggen window.

Run msconfig to switch on autostart for AGMaster and ag_bscan

Select

Start | AG500 | Run (see Figure 3)

Type msconfig and click OK to execute the system configuration utility.

Select the "Startup" Tab and check AGMaster and ag_bscan (see Figure 6).

Click OK.

Say No – do not restart the computer now.

set "rawdata" folder to "shared"

Share the "rawdata" folder with maximum allowed acces.

Switch to PSR-Computer

switch to the PSR-Computer:

press and release the [Alt+Ctrl+Shift] key

2

[enter]

Run ag_bscan to activate the "senrec.exe" program

Select

Start | AG500 | ag_bscan

to execute the boundary scan program for loading the FPGA and the senrec program (see Figure 3).

Click the "load program" button and inside the open dialog please select the senrec.exe program in the folder D:\soft\senrec.

Run msconfig to switch on autostart ag_bscan

Run the same procedure as on the Trans-Computer.

Check the ag_bscan option on the Startup Tab (see Figure 9).

Say No – do not restart the computer now.

Switch to Trans-Computer

switch to the Trans-Computer:

press and release the [Alt+Ctrl+Shift] key

1

[enter]

Start AGMaster

Select

Start | AG500 | ag_bscan (see Figure 3)

After a while all status should appear in “green”.

Shut down System

Shutdown the system with the “extra menu” AGMaster program (see Figure 1 or <http://www.ag500.de/AGMaster6.pdf> on page 6).

With the next power up the system should come up with all programs active.